



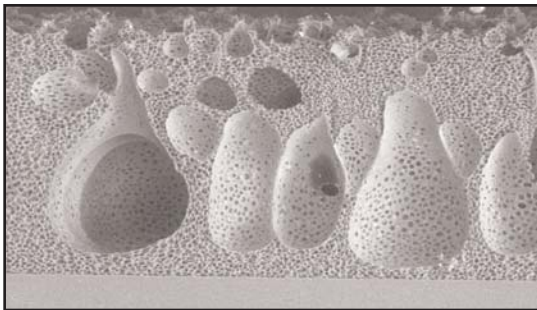
# SPM3100 Final Polish Pad

## DESCRIPTION

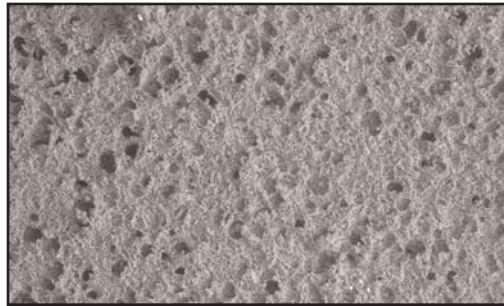
The newest poromeric technology developed by Rohm and Haas Electronic Materials for silicon final polishing, the SPM3100 pad features a proprietary pore structure grown directly on a polyester film substrate. The simplicity of this design, combined with the unique pore structure, reduces variations in pad physical properties. This provides more consistent performance throughout the life of the pad and a much lower nano-scratch level. The SPM3100 pad is recommended as a final pad for all polishing operations where surface finish is critical as defined by haze, microscratches, roughness and light point defects.

## BENEFITS

- Fast break-in time
- High pad thermal conductivity increases efficiency of platen cooling systems, and optimizes polishing performance
- Low micro scratching on the wafer surface
- Lower waviness degradation vs. conventional pads
- Low LPD counts, haze levels, and roughness levels
- Consistent haze levels over lifetime of pad.



SPM3100 Pad Cross Sectional View



SPM3100 Pad Cross Top View

## Performance Data Shows Improved Surface Quality

Pad Type	Average				Average + 3σ			
	Scratch Count	Haze Wide (ppm)	Haze Narrow (ppm)	LPD Count (>0.08 μm)	Scratch Count	Haze Wide (ppm)	Haze Narrow (ppm)	LPD Count (>0.08 μm)
Competitor A	20	0.05	0.05	1922	82	0.09	0.07	6009
Competitor B	11	0.03	0.05	1544	29	0.05	0.10	2906
<b>SPM3100</b>	<b>3</b>	<b>0.05</b>	<b>0.05</b>	<b>1360</b>	<b>7</b>	<b>0.06</b>	<b>0.06</b>	<b>1972</b>

Wafer specs: 200mm, {100}, P+, res-0.006 - 0.175, acid etched  
Inspection tool: KLA-Tencor Surfscan™ SP1



creating the  
**flawless** surface

## PRODUCT OPTIONS

- Standard and pattern liner adhesive
- Standard and custom grooving available

### Typical Properties

Total Thickness	0.028"
Deflection	0.0013"
Compressibility	5%

## PRODUCT MANUFACTURING

SPM3100 pads are produced at our state-of-the-art ISO 9001:2000 and ISO 14001 certified manufacturing facility in Newark, Delaware. This facility has the demonstrated capacity to handle high-volume production requirements. The plant has the flexibility to deliver customized pads that address the needs of both routine and unique process applications.

## PLATEN APPLICATION

Apply only to a clean, dry surface at room temperature. If an appropriate solvent such as isopropyl alcohol is used to clean the platen after a pad removal, allow the platen to dry completely and return to room temperature before applying the pad. PSA adhesion deteriorates if there is solvent remaining on the platen or if the platen is unusually cold.

When applying the pad to the platen, peel the release liner from one edge of the pad. Fold liner back approximately two inches. Align the pad with the edge of the platen and adhere. In one continuous movement, slowly peel the remaining release liner off the pad while pressing the pad down on the platen. The application should be smooth and uniform with even pressure from the pad mounting tool (such as a flat disk or hand roller).

## PACKAGING

SPM3100 pads can be delivered on a pressure sensitive adhesive (PSA) backed with a non-particulate release liner, and individually bagged to ensure cleanliness.

## SHELF LIFE

Standard shelf life is one (1) year from the date of manufacture.

## STORAGE

SPM3100 pads should always remain flat. Bending pads during handling can cause wrinkles in the PSA and premature delamination of the release liner. All pads should be stored and transported in the original packaging. This product should be stored in temperatures between 10°C to 24°C (50°F to 75°F) and at <50% humidity. Exposure for six (6) months or less to conditions between -17°C to 48°C (0°F and 120°F) and/or at relative humidity of up to 100% will not impact the product performance as long as the release liner remains intact and attached to the PSA. In all cases, the product should be allowed to return to normal room temperatures prior to use.

## PRECAUTIONARY NOTES

Follow all MSDS and label precautions as well as good industrial hygiene practices when handling or using this product. Keep this and all industrial materials away from untrained personnel.

## DISPOSAL

Dispose in accordance with all applicable regulations.

Rohm and Haas and Rohm and Haas Electronic Materials are trademarks of Rohm and Haas Company or its affiliates. KLA-Tencor Surfscan SP1 is a trademark of KLA-Tencor.

### UNITED STATES

#### Phoenix, Arizona

Tel: 602.431.0500

Fax: 602.431.0200

#### Newark, Delaware

Tel: 302.366.0500

Fax: 302.366.0187

#### Customer Service

800.404.8775

### EUROPE

#### Feldkirchen, Germany

Tel: 49.89.904.8370

Fax: 49.89.904.83799

### KOREA

#### Seoul

Tel: 82.2.3489.8900

Fax: 82.2.3489.8904

### MALAYSIA

#### Penang

Tel: 60.4.370.1212

Fax: 60.4.370.1010

### TAIWAN

#### Tainan Hsien

Tel: 886.6.589.5560

Fax: 886.6.501.4102

#### Hsinchu City

Tel: 886.3.572.5899

Fax: 886.3.573.6800

### SINGAPORE

Tel: 65.6796.6195

Fax: 65.6863.4890

### JAPAN

#### Nara Prefecture

Tel: 81.743.56.8241

Fax: 81.743.56.1297

#### Tokyo

Tel: 81.3.3586.2793

Fax: 81.3.3586.2794

#### Osaka

Tel: 81.6.6563.1291

Fax: 81.6.6563.1292