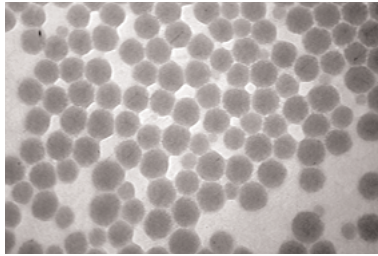




Klebosol® Slurry Products

DESCRIPTION

Klebosol® slurry products are the most widely used colloidal silica products for CM polishing. These particles are grown and maintain excellent stability in their liquid medium. Klebosol slurries have been shown to meet or exceed industry expectations with competitive results.



Precisely Controlled Klebosol® Particles.

KEY FEATURES

- Individual, non-settling spherical particles
- Wide range of particle sizes offered
- Non-agglomerating slurries with tight particle distributions
- Enables superior pad life and wafer surface quality
- Long shelf life
- Product development for customized applications
- Single component—ready to use
- Enables high removal rates
- Two global manufacturing facilities
- Slurries available as Klebosol II product line optimized to reduce and control large particle counts

Klebosol® Product Family

Application	Product Name	Particle Size*	% Solids	pH	Chemistry	Comments
ILD, STI	1501-50	50 nm	30%	10.9	KOH	Standard KOH Product
	OX-1	50 nm	25%	10.9	KOH	Lower COO KOH
	1508-50	50 nm	30%	10.9	NH ₄ OH	Standard NH ₄ -OH Product
	OX-2	50 nm	25%	10.9	NH ₄ OH	Lower COO NH ₄ -OH
	30N50	50 nm	30%	10	NH ₄ OH	Original CMP Product
	30N50PHN	50 nm	30%	10.9	NH ₄ OH	Higher Removal Rate Than 30N50
Post-Metal Buff, Polysilicon	1498B-50	50 nm	30%	7	Proprietary	Neutral pH Product
Post-Tungsten Buff	30HB50K	50 nm	30%	2.5	Proprietary	Acidic Product
	30HB25K	25 nm	30%	2.5	Proprietary	Acidic Product
Polysilicon	1508-35	35 nm	30%	10.9	NH ₄ OH	Low Poly:oxide Selectivity
	1509-12	12 nm	30%	10.9	Proprietary	High Poly:oxide and Poly: Si ₃ N ₄ Selectivity
	1618	12 nm	10%	7	Proprietary	Lower removal rate and selectivity than 1509-12
Direct STI	STS-2	25 nm	30%	2.5	Proprietary	High Oxide: Si ₃ N ₄ Selectivity

* As calculated from specific surface area derived from titration data.



creating the
flawless surface

MIXING AND DISPENSING

Storage tanks and distribution piping should be constructed of engineering plastic, such as polyethylene, polypropylene, or PTFE. Materials such as aluminum, copper, brass, and PVC should be avoided. Avoid leaving slurry containers open for extended periods of time. Leaving containers open may result in drying which can cause wafer scratching. Consult your Rohm and Haas Electronic Materials representative for recommendations when designing handling systems and optimum point of use filtration schemes.

PACKAGING

Standard drums come in two sizes: 5 gallon, and 55 gallon. Standard totes also come in two sizes: 264 gallon and 330 gallon. These totes are rigid, virgin, HDPE vessels in an aluminum cage overpack. The openings are six-inch buttress with a two-inch NPT bung with a bottom drain. They can accept dip tubes or other commercially available dispense systems.

STORAGE

Storage outside of the recommended conditions may result in irreversible product degradation. Products can be stored up to the expiration date between the temperatures range of 0°C - 45°C (32°F - 113°F). Avoid prolonged exposure at temperatures at either extreme. In the event of exposure outside of the recommended conditions, please contact your Rohm and Haas Electronic Materials technical representative for recommendations. In all cases the products should be allowed to return to a room temperature prior to use. All shipments include temperature indicators to monitor shipping conditions.

PRECAUTIONARY NOTES

Follow all MSDS and label precautions as well as good industrial hygiene practices when handling or using this product. Keep this and all industrial materials away from untrained personnel.

DISPOSAL

Dispose in accordance with all applicable regulations.

Rohm and Haas and Rohm and Haas Electronic Materials are trademarks of Rohm and Haas Company or its affiliates. Klebosol is a registered trademark of AZ Electronic Materials.

UNITED STATES

Phoenix, Arizona

Tel: 602.431.0500

Fax: 602.431.0200

Newark, Delaware

Tel: 302.366.0500

Fax: 302.366.0187

Customer Service

800.404.8775

KOREA

Seoul

Tel: 82.2.598.4881

Fax: 82.2.598.4882

EUROPE

Feldkirchen, Germany

Tel: 49.89.904.8370

Fax: 49.89.904.83799

MALAYSIA

Penang

Tel: 60.4.370.1212

Fax: 60.4.370.1010

CHINA

Shanghai

Tel: 86.21.6495.5141

Fax: 86.21.6495.2536

TAIWAN

Tainan Hsien

Tel: 886.6.589.5560

Fax: 886.6.501.4102

Hsinchu City

Tel: 886.3.572.5899

Fax: 886.3.573.6800

SINGAPORE

Tel: 65.6796.6195

Fax: 65.6863.4890

JAPAN

Nara Prefecture

Tel: 81.743.56.8241

Fax: 81.743.56.1297

Tokyo

Tel: 81.3.3572.1637

Fax: 81.3.3571.5684

Osaka

Tel: 81.6.6563.1291

Fax: 81.6.6563.1292