



Rodel® DPM Series

DESCRIPTION

Rodel® DPM series are poromeric urethane pads with a tightly controlled polyester film substrate. They are designed to have consistent properties which produce a well-balanced polishing process as compared to conventional polishing pads. The manufacturing process is tightly controlled to minimize variation in common pad properties such as substrate and pad thickness, compressibility, coating height and pore structure.

Rodel offers a full range of DPM pads designed to meet your specific polish requirements. DPM 1000 and 2000 are designed to be used as first step polish pads yielding increased removal rates and reduced waviness measurements. Rodel® DPM 3000 and 4000 are designed to be used with second step slurries for final polishing, yielding reduced surface roughness and improved surface quality.

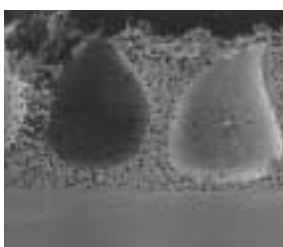
BENEFITS

- Lower microwaviness
- Reduced break-in time
- Higher throughput
 - Stable removal rate
 - Minimal conditioning
- Improved surface quality
 - Reduced defectivity
 - Reduced roughness
 - Reduced microscratches
- Easier mounting and identification of mounting defects

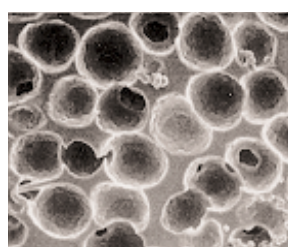
DPM Typical Properties

DPM	1000	2000	3000	4000	6000
Application	First Step	First Step or One Step	First Step or One Step	Second Step	Super Finish
Compressibility	5%	9%	11%	14%	18%
Pore Count/mm²	50	60	60	60	75
Total Thickness	22.5 mils Not including PSA				

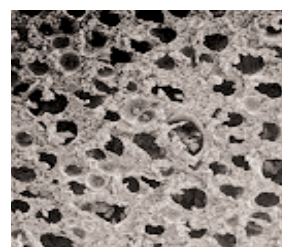
CROSS SECTION AND TOP VIEW OF DPM



Cross Section 100X

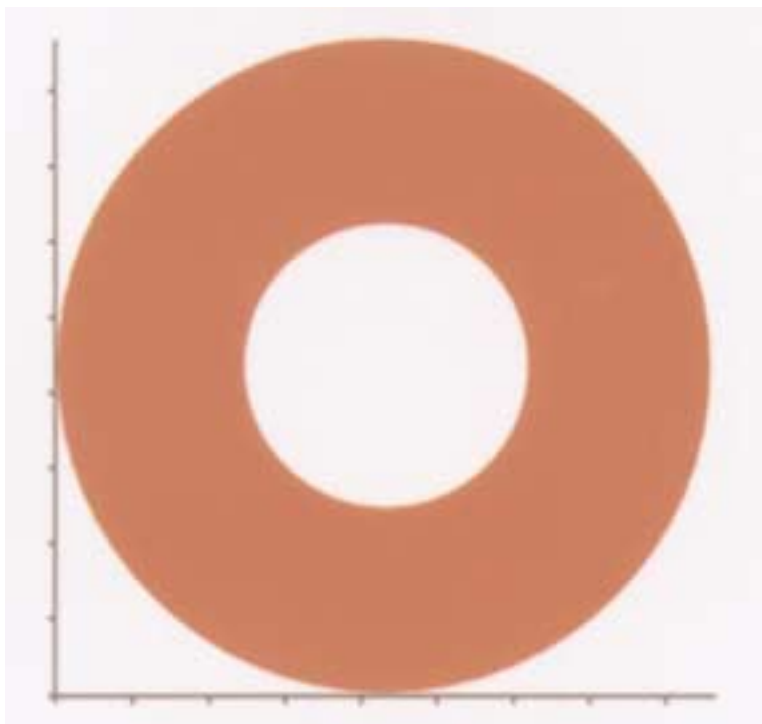


Cross Section 1,000X



Top View 100X

OPTIFLAT IMAGE NPP



DPM2000 Pad - First Step Polish

Pad life = >150 runs

Wa = 6.7 Å

PV = 81.3 Å

SHIPPING, HANDLING AND STORAGE

DPM pads are packed in Rodel standard Clean Packs which are double bagged in specially treated bags to reduce static charge buildup. They are cleaned with a high efficiency particle absolute (HEPA) vacuum and have a pressure sensitive adhesive (PSA) backed with non-particulate release liner.

Standard shelf life is one year from the date of manufacture. It is recommended that DPM pads be stored in their original packaging in temperatures between 50° - 75°F (10° - 24°C) until time of use. Once pads are removed from package, maintain at less than 50% humidity. The shelf life of pads stored in conditions outside these ranges may be reduced. Pads should always remain flat and not be stacked more than 20 pads high. It is best to store and transport pads in their original boxes until used. All

pads are packed individually to prevent contamination prior to application. Bending during handling can cause wrinkles in the PSA and premature delamination of the release liner.

PLATEN APPLICATION

Apply only to a clean, dry surface at room temperature. If an appropriate solvent, such as isopropyl alcohol, is used to clean the platen after a pad removal, allow the platen to dry completely and return to room temperature before applying a new pad. Solvents remaining on the platen or an unusually cold platen will lower PSA adhesion.

Rodel also provides technical support for specific customer needs and requirements. For assistance, please contact Disk Technical Services at the customer service number below.

www.rodel.com
info@rodel.com

UNITED STATES
Phoenix, Arizona
Tel: 602.431.0500
Fax: 602.431.0200
Newark, Delaware
Tel: 302.366.0500
Fax: 302.366.0187
Customer Service
800.404.8755
24/7 Technical Hotline
(USA) 800.763.3526
(Int'l) 520.882.1764

EUROPE
Germany, Feldkirchen
Tel: 49.89.904.8370
Fax: 49.89.904.83799
France, Mimet
Tel: 33.4.42.69 9418
Fax: 33.4.42.699419

TAIWAN
Tainan Hsien
Tel: 886.6.2828908
Fax: 886.6.2514145
Hsinchu City
Tel: 886.3.572.5899
Fax: 886.3.573.6800

KOREA
Seoul
Tel: 82.2.598.4881
Fax: 82.2.598.4882

MALAYSIA
Penang
Tel: 60.4.370.1212
Fax: 60.4.370.1010

SINGAPORE
Tel: 65.861.9153
Fax: 65.862.5976

JAPAN
Nara Prefecture
Tel: 81.743.56.8241
Fax: 81.743.56.1297
Tokyo
Tel: 81.3.3572.1637
Fax: 81.3.3571.5684
Osaka
Tel: 81.6.6563.1291
Fax: 81.6.6563.1292
Mia
Tel: 81.594.46.5120
Fax: 81.594.46.5122